

# ADMINISTERING TEAM FOUNDATION SERVER 2010 PHYSICAL/VIRTUAL MACHINE BUILD GUIDE

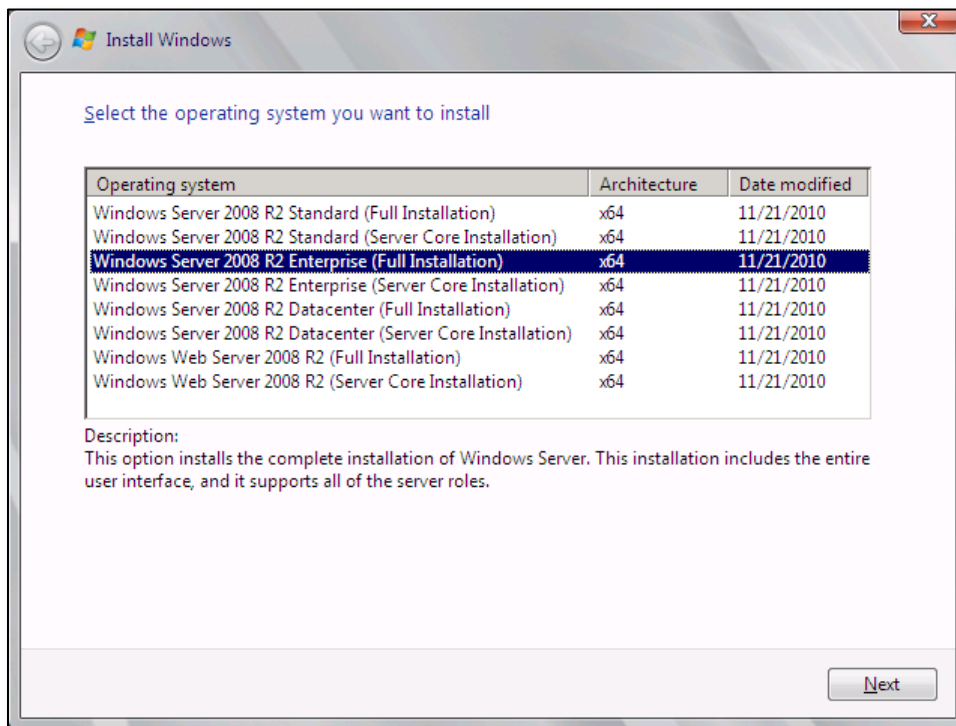
April 2011

You will need to create an environment that meets the prerequisites detailed in the [Team Foundation Installation Guide for Visual Studio 2010](#). At a high level that means:

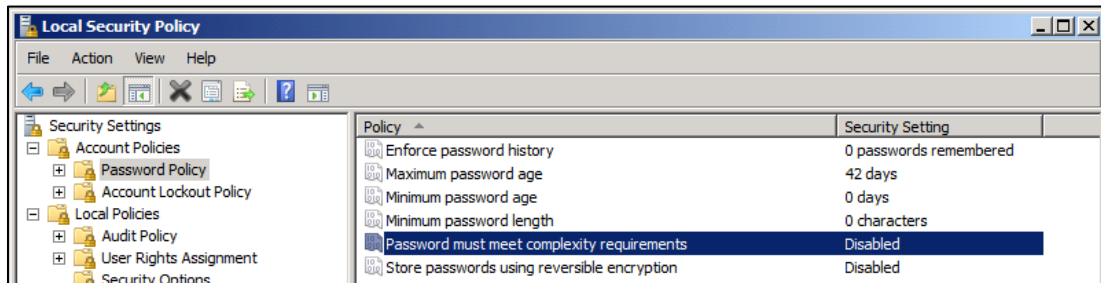
- Windows Server 2008 (R2 is ok)
- Add IIS 7.0 (7.5 is ok) and SMTP role services and features
- SQL Server 2008 (R2 is ok)
- Office 2007/2010 applications (Word, Excel, PowerPoint, Project)
- Additional configuration such as windows updates, firewall, etc.

## A. Windows Server 2008 Operating System

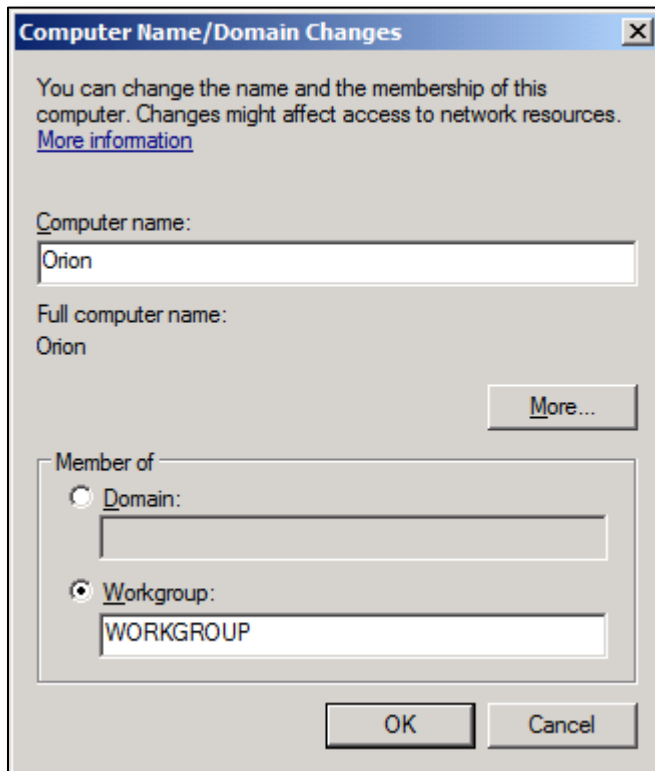
- Start with a physical or virtual machine with at least 2.5 GB of RAM (more is better)
- Install Windows Server 2008 (or R2) with current service packs
- Use Enterprise Edition if available



- Set the Administrator's password to password – this may require you to change the password complexity settings

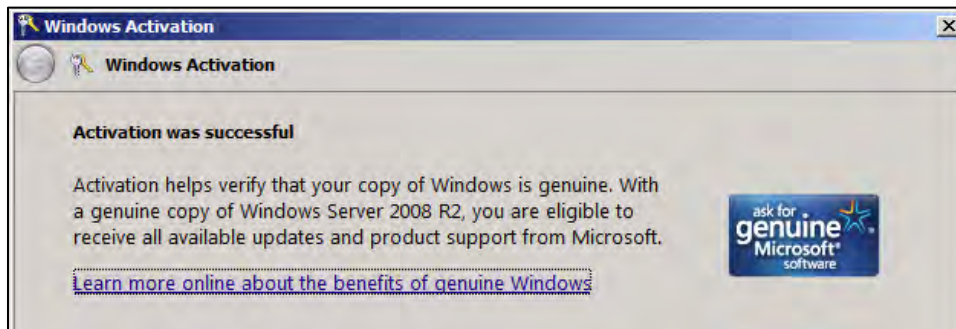


- Set Time zone
- Change computer name to Orion – technically not required, but some screenshots in the lab will show this

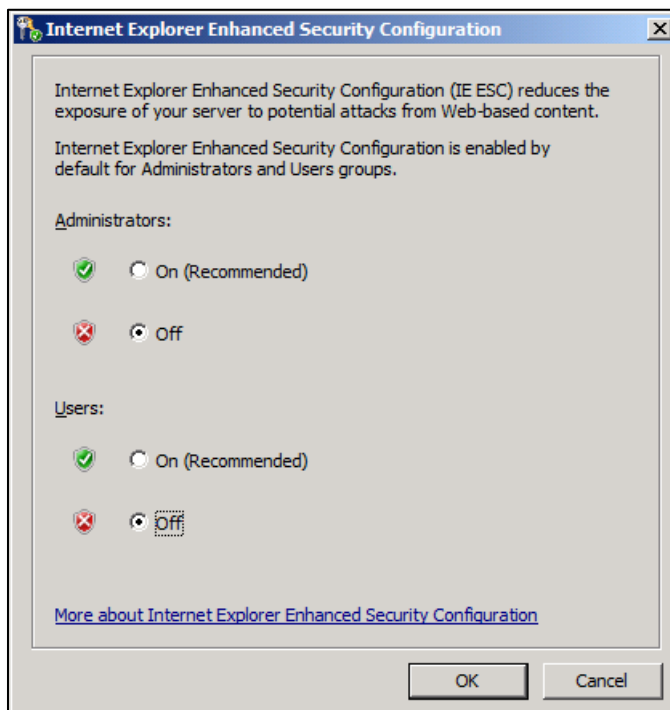


- Enable Remote Desktop
- Disable Windows Firewall

- Activate Windows



- Configure IE ESC and turn it off for everybody:



- Launch IE8 and go through the initial set up and set home page (optional)
- Install any VPC/Hyper-V Integration Services (if applicable)
- Manually check for updates (optional)
- Uncheck the box to not show the Initial Configuration Tasks dialog at logon (optional)
- Uncheck the box to not show Server Manager at logon (optional)
- Set any initial desktop/start menu icons and general look and feel (you and students will be logging and using the Administrator account)

B. Install IIS7 (per the [TFS 2010 Installation Guide](#))

- Add the Web Server (IIS) role with the following role services: ASP.NET (plus all required role services), Windows Authentication, IIS 6 Management Compatibility (and all subordinate check boxes)
- Manually check for updates (optional)

C. Install SQL Server 2008 (per the [TFS 2010 Installation Guide](#))

- Create a SQLSERVICE local user account with a password of password

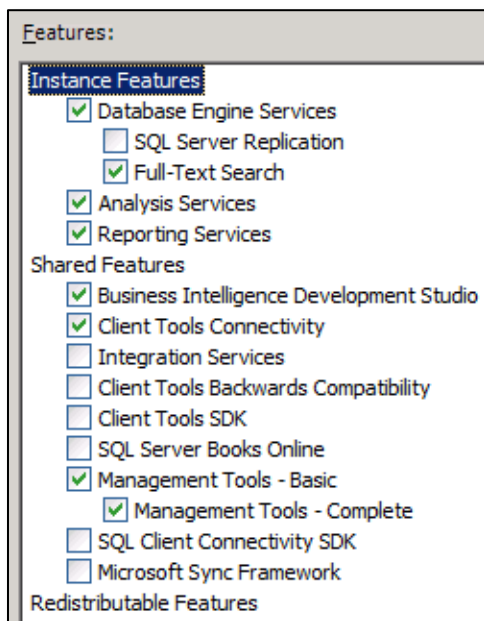
The screenshot shows a 'New User' dialog box with the following fields and options:

- User name: SQLSERVICE
- Full name: SQL Server Service Account
- Description: SQL Server Service Account
- Password: [masked]
- Confirm password: [masked]
- User must change password at next logon
- User cannot change password
- Password never expires
- Account is disabled

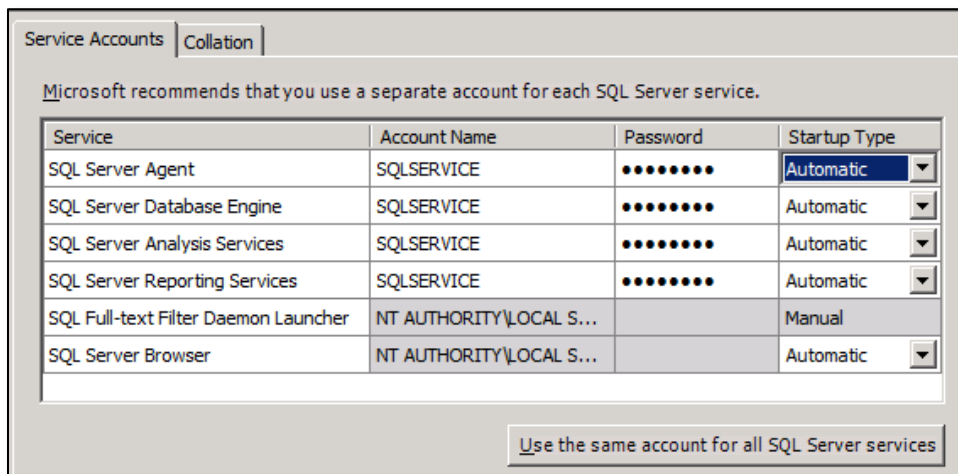
Buttons: Help, Create, Close

- Install SQL Server 2008 (or R2) Enterprise Edition with current service packs
- Make sure to install the Database Engine Services, Full text search, Reporting Services, Analysis Services

- As for shared features, at a minimum I would install BIDS, Client Tools Connectivity, Management Tools (Basic and Complete)

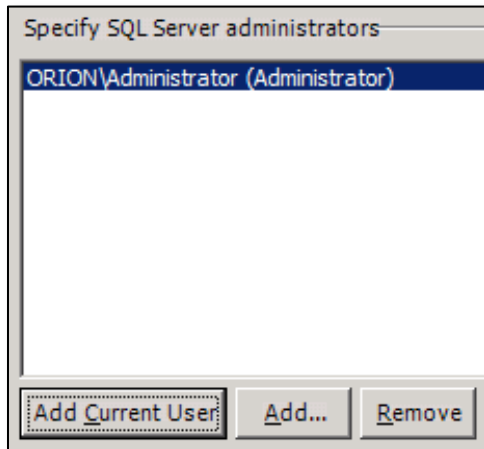


- Give all the services the same account SQLSERVICE and make sure they are all set to automatic



- Windows authentication is required; you can add an SA (mixed-mode) account and password too, if you'd like

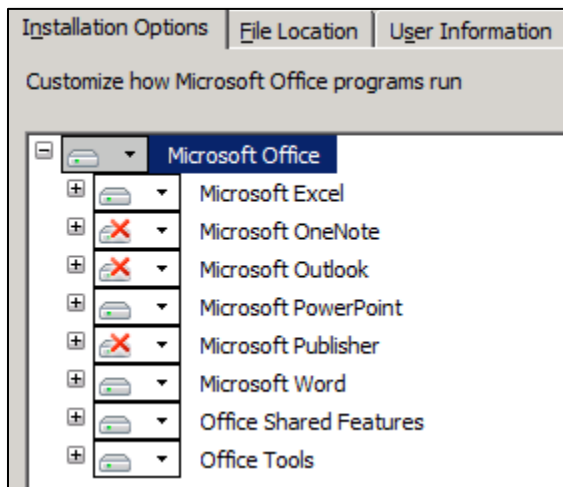
- Add the current user as a SQL Server System Administrator (SA)



- Add the current user as an Analysis Services Administrator
- For Reporting Services, choose the **Install the native mode default configuration** option
- Deny **Log on locally** user right to the SQLSERVICE account (optional)
- Manually check for updates (optional)

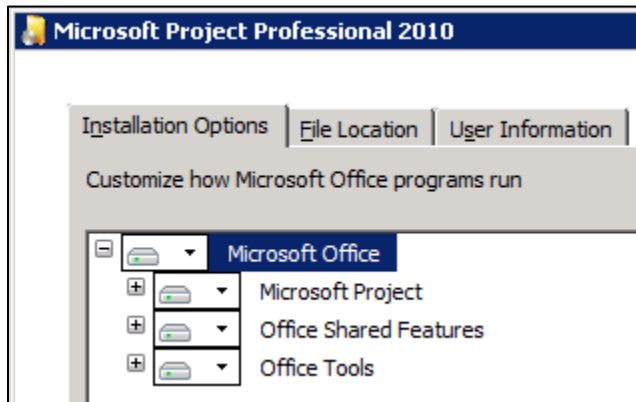
#### D. Install Office 2010 Applications

- Install Office 2010 Standard (or Professional) Edition, but only Excel, PowerPoint, and Project:



- Launch each Office application once to activate/set preferences

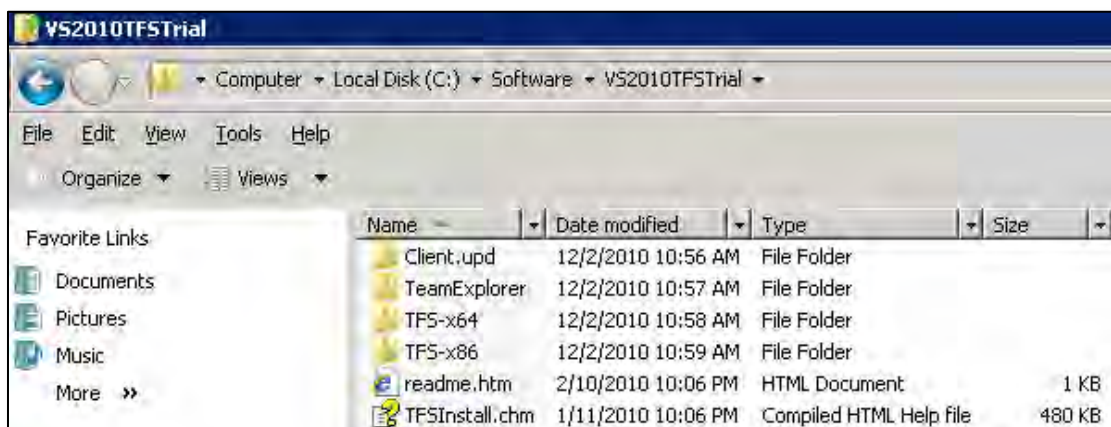
- Install Project Professional 2010



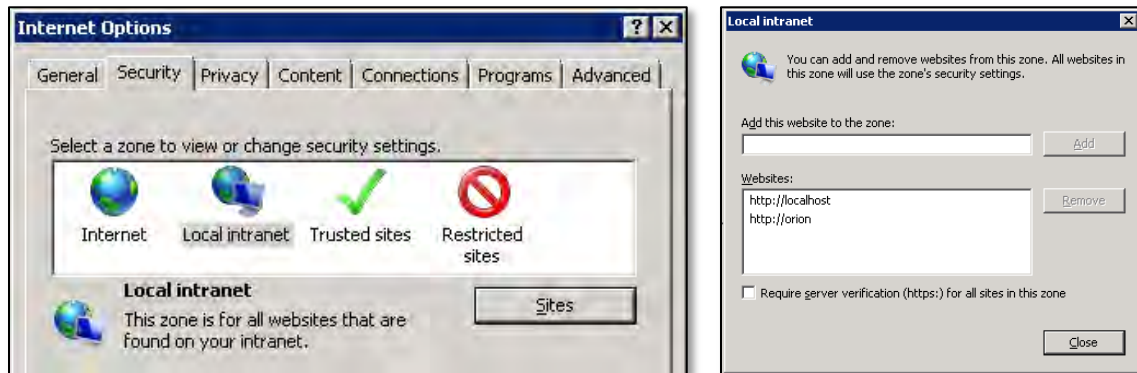
- Launch Project to activate/set preferences
- Manually check for updates (optional)

#### E. Install additional software and other prep

- Using Server Manager, add the SMTP Server feature (and required role services)
- Windows Install WINRAR or other .ZIP file management software
- Run SQL Server Management Studio one-time and connect to Database Engine on Orion
- Run SQL Server Business Intelligence Development Studio one-time
- Add any icons to the desktop, start menu, or (quick launch) task bar you want
- Create a folder C:\Software\VS2010TFSTrial with the trial edition of Team Foundation Server installed:



- Add http://orion and http://localhost to Internet Explorer's Local Intranet zone



- Manually check for updates (optional)
- Clear the browser cache
- Clear the event logs
- Save/image/snapshot the environment

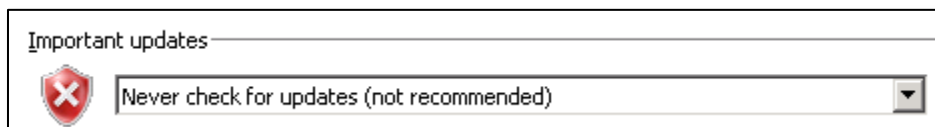
#### F. FAQ

Q. Should I create the various TFS related service accounts?

A. No. Don't create them. They are created as part of the course

Q. Should I enable automatic updates?

A. No. They will inevitably interrupt the learning experience. Manual updates are better.



Q. Should I turn on Windows firewall?

A. No. It's not necessary and could only get in the way of the learning experience.

Q. Can I use the SQL Server 2008 evaluation VHD found here: <http://bit.ly/i5GgMs?>

A. Maybe, but we have not tested it. Starting with it might save you some build steps.