

LEVERAGING MSBUILD 4.0

PHYSICAL/VIRTUAL MACHINE BUILD GUIDE

June 2011

You will need to create an environment that can run Visual Studio 2010 (any edition).

We recommend:

- Windows 7 Professional Edition w/ SP1
- Visual Studio 2010 Ultimate edition w/ SP1

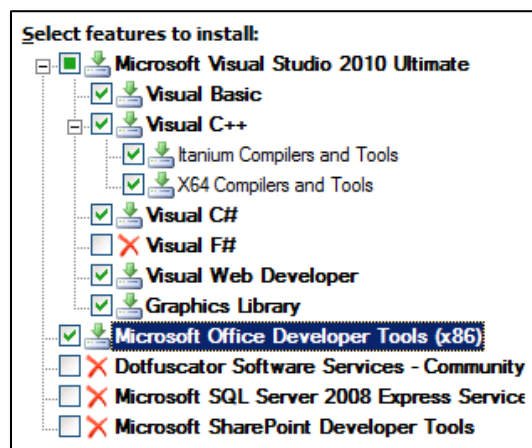
Note: You **won't** need to install SQL Server, Office, or Team Foundation Server

A. Windows 7 Operating System

- Start with a physical or virtual machine with at least 1.5 GB of RAM (more is better)
- Install Windows 7 with current service packs
- Create an account Student with a password of password
- Set the time zone
- Activate Windows

B. Install Visual Studio 2010

- Install Visual Studio 2010 Professional, Premium, or Ultimate edition
 - Be sure to install all C# and C++ features



- Install Visual Studio 2010 SP1

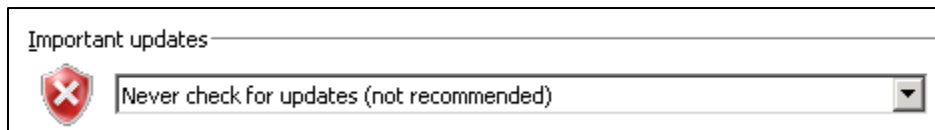
C. Install additional software and other prep

- Install WINRAR or other .ZIP file management software
- Install the .NET 2.0 Framework SDK (this is the default that MSBuild 4.0 targets)
- Add any icons to the desktop, start menu, or (quick launch) task bar you want
- Turn of User Account Control (UAC)
- Turn off automatic updating
- Clear the browser cache
- Clear the event logs
- Set any initial desktop/start menu icons and general look and feel (Remember the students will be logging using the *Student* account)
- Manually check for updates
- Save/image/snapshot the environment

D. FAQ

Q. Should I enable automatic updates?

A. No. They will inevitably interrupt the learning experience. Manual updates are better.



Q. Should I turn on Windows firewall?

A. No. It's not necessary and might get in the way of the learning experience.